

# SAFE Suite: Policy-based Converged Security Management

## QUANTUM SECURE

### SAFE POLICY SERVER

SAFE Policy Server is physical security industry's first, patented and state-of-the-art policy management engine that allows security managers to deploy globally proven best practices & policies / rules across heterogeneous applications, systems and devices without knowledge of programming individual systems. SAFE Policy Server is engineered to make physical security management fast, easy, and cost-effective by centralizing and automating what has traditionally been an intensely manual and error-laden process. Security managers can now visually define global or regional security policies using a browser on a process-by-process basis (such as New Hire / Termination, Access Changes, Request to High Assurance Doors, Location based Access, Response to Door Ajar Alarm, False Alarm, etc.). SAFE Policy Server applies the security policies on every event / activity that is transmitted within the diverse Physical Security infrastructure.

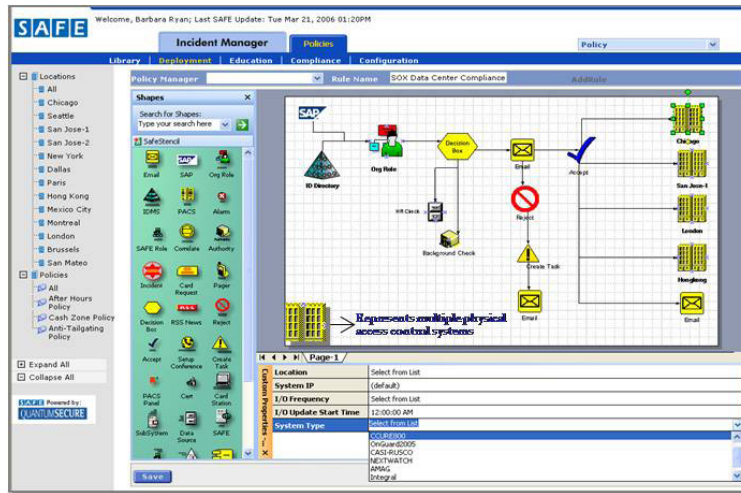
SAFE Policy Server allows security managers to manage and create security policies by importing existing policy documents (doc, PDF, xls, etc) and activating policy rules graphically using a Visio-based visual front end. Using SAFE Security Stencil, security managers can now use their Web browsers to read, edit, deploy, provide access, specify effective dates, move and copy policies to any global, regional or local facility. Security managers can set up and track policy review and approval processes, incorporate education and training on policies via specialized quizzes, easily monitor anomalies through policy compliance, and reporting.

Policies are configured by simply dragging and dropping appropriate live objects and linking them electronically. The policy server automatically converts the visual schematic drawing of a policy into appropriate rules and instruction set applicable to the underlying physical security infrastructure — such as physical access control systems (PACS), video, HR systems and life safety systems.

### SAFE INTEGRATION PLATFORM

SAFE Integration Platform enables various heterogeneous physical security applications, systems and devices to integrate amongst themselves and with enterprise IT systems like SAP, PeopleSoft, IDMS systems, LDAP, Active Directory, etc. With SAFE, integration is simplified with broad out-of-the-box support for physical and IT security applications and systems, and universal connectors for extending the security policies to new and custom environments. SAFE Integration Platform support native API and Web services based integration such as interoperability via SPML and SAML standards for Badge Issue, Termination, Badge-

Location Validation, SSO, RFID interface, etc. SAFE implements all integration scenarios as automatic orchestrations, developed WITHOUT writing code in any programming language. Instead, a business/security analyst uses the Orchestration Designer to graphically organize a defined group of live objects to express the conditions, loops, and other behavior of the business process. Each orchestration creates subscriptions to indicate the kinds of messages it wants to receive or transmit.



## Partners



imagination at work



## Products At-A-Glance

Product Name	Description	Features
<b>SAFE Physical Identity Management (P-IDMS)</b>		
	SAFE Physical Identity Management (P-IDMS) lets you manage physical & identity cardholders access across diverse and typically non-interoperable PACS and biometric /smart cards, and RFID-based systems. It is a standards based, centralized, scalable application providing role-based physical access control systems (PACS) management for cardholders, automated card provisioning /de-provisioning processes, user administration, synchronization with directory and HR systems as well as PKI certificate infrastructure.	<ul style="list-style-type: none"> <li>Automated configurations for different PACS</li> <li>Centralized "Access Privileges" management</li> <li>Role- and time-based access control rules across all PACS</li> <li>Workflow-based centralized cardholder identity and on-board/off-board process management</li> <li>Access control grants, revocation, modification, and user entitlement management across heterogeneous systems</li> <li>Tight integration with IT security and ID management systems</li> <li>Secure Web-based single sign on</li> </ul>
<b>SAFE Centralized Web-based Badging (CWB)</b>		
	SAFE Centralized Web-based Badging provides an easy, centralized way to enroll cardholders into virtually any existing PACS. This enables flexible enrollment, validation, and processing of individuals gaining temporary or long-term access to a given facility.	<ul style="list-style-type: none"> <li>Multi-user Web-based ID Badging to create, issue, manage, produce, and control secure ID cards</li> <li>Single Web console for consolidating visitor/vendor/employee badging</li> <li>Web-based pre-registration management tool to modify and update registration information of visitors, groups, or employees</li> <li>Policy-based PACS clearance assignment enforcement</li> </ul>
<b>SAFE Self-Service Access Manager (SSAM)</b>		
	Self-Service Access Manager (SSAM) is a robust, fully automated solution to enables employees/contractors/outsourced vendors/visitors to perform their own physical access changes and modifications from a single Web site. Security managers deploy global/regional policies for self-service identity, card, and access management across the enterprise using SSAM's automated Web interface. SSAM reduces security operational costs and eases daily administration burdens on security staff.	<ul style="list-style-type: none"> <li>Full automation and integration with all PACS brands, as well as HR/Directory systems like LDAP, MS Active Directory, SAP, PeopleSoft, etc.</li> <li>Customizable, granular and entity level delegated administration</li> <li>Common policy physical access privileges management of employees and contractors</li> <li>Centralized, secure management of access rights and centralized audit logs</li> </ul>
<b>SAFE Compliance Regulator (CR)</b>		
	SAFE Compliance Regulator (CR) provides regulation specific security policies and reports to help enterprises comply with regulatory requirements. For example, the SAFE Sarbanes Oxley policy template includes a rich collection of rules to manage segregation of duties, access approvals, configuration / change management and usage of global PACS.	<ul style="list-style-type: none"> <li>PACS management under strict security and organizational controls</li> <li>Logging and alerting for deviations</li> <li>Reporting for internal audits and regulatory compliance across worldwide sites.</li> <li>Easy view of who accesses what physical areas, for how long, who approved the access request</li> </ul>
<b>SAFE Security Reporter (SR)</b>		
	SAFE Security Reporter (SR) provides real-time reports on common operational and management information that security organizations need on regular basis. Typical reports collect operational and trend data for quarterly evaluations of security staff, to help plan future security budgets, resource requirements, etc.	<ul style="list-style-type: none"> <li>Easy to use, Web-based reporting and interface</li> <li>Customization options for branding, navigation, language, etc</li> <li>Decision support tools accessible in a single interface</li> <li>Adaptable interface with familiar look and feel of existing apps</li> <li>Limitless presentation formats (Web, Email, PDF, MS Excel, etc)</li> </ul>
<b>SAFE Physical Security Event Manager (PSEM)</b>		
	SAFE Physical Security Event Manager (PSEM) provides a centralized tool to manage security devices, infrastructure and operations globally. SAFE Physical Security Event Manager leverages existing physical security systems and enables security teams to view, manage and control security resources from a single, centralized workstation.	<ul style="list-style-type: none"> <li>Centralized viewer to manage devices and events</li> <li>Correlation of security data from multiple devices and systems</li> <li>Critical event detection</li> <li>Vulnerability management</li> <li>Statistical and behavioral physical anomaly detection</li> <li>Business rules alerting</li> <li>Intelligent alarm normalization and storage</li> </ul>
<b>SAFE PIV Enrollment Manager</b>		
	SAFE PIV Enrollment Manager automatically enrolls PIV cardholders into the existing diverse PACS based upon intelligent policies and rules. These policies act as a guard against fraud and foster real time audit and compliance.	<ul style="list-style-type: none"> <li>Enrollment for FIPS 201-compliant credentials into PACS</li> <li>Integration and support for multi-vendor PACS environments, as well as multiple LDAPs and other directory / HR systems</li> <li>Automatic revocation of access privileges to coincide with revocation of the identity credentials (digital certificate)</li> <li>Centralized access control-related processes across the agency</li> </ul>

www.quantumsecure.com

100 Century Center Ct., Suite 501, San Jose, CA 95112 USA

Tel: + 1-408-687-4587 Fax: + 1-408-528-1057 Email: info@quantumsecure.com

© 2007 Quantum Secure, Incorporated. All rights reserved. Printed in the USA.

Quantum Secure and the Quantum Secure logo are registered trademarks of Quantum Secure Incorporated in the United States and/or other countries. All other trademarks are the property of their respective owners.